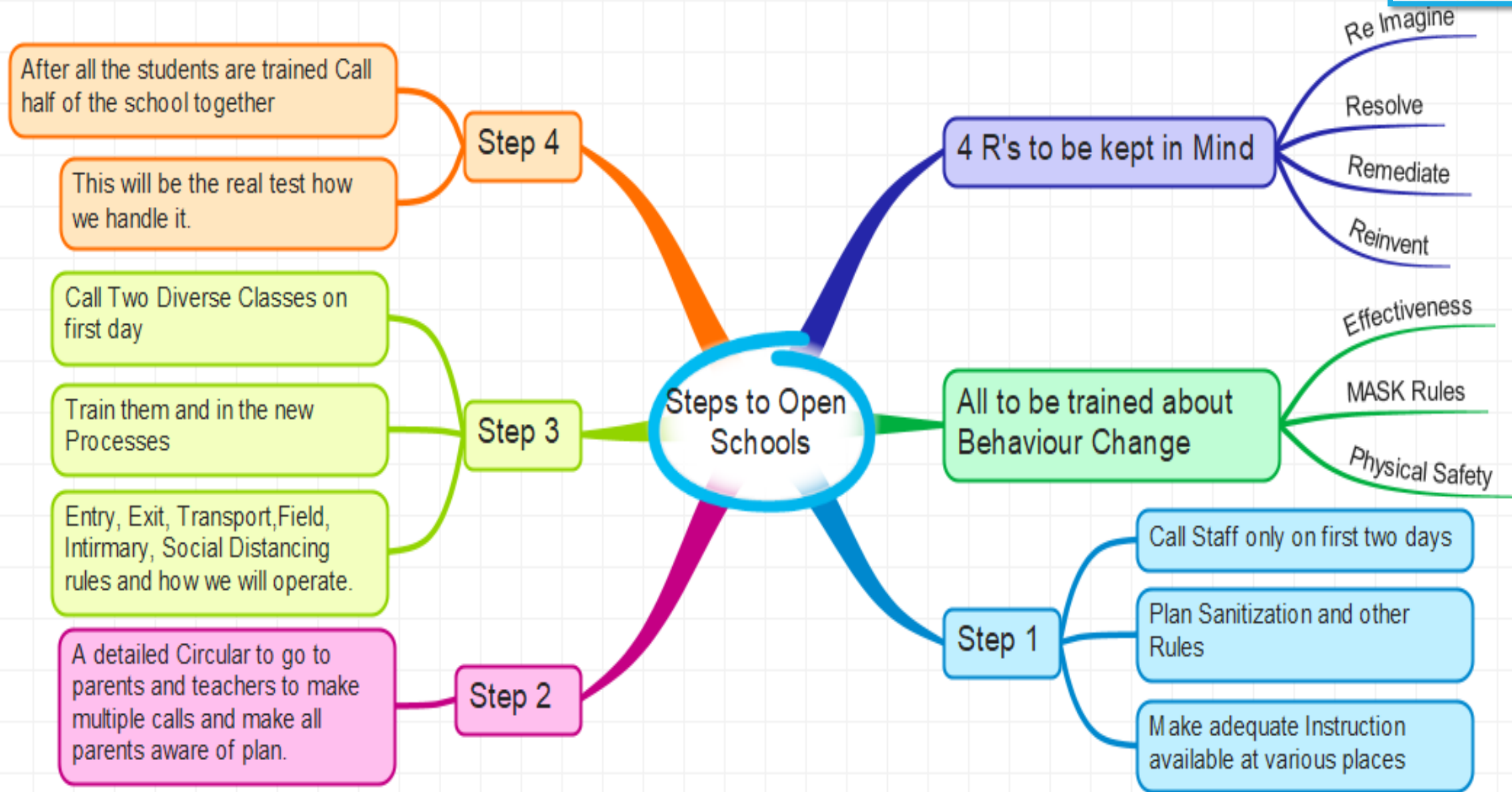
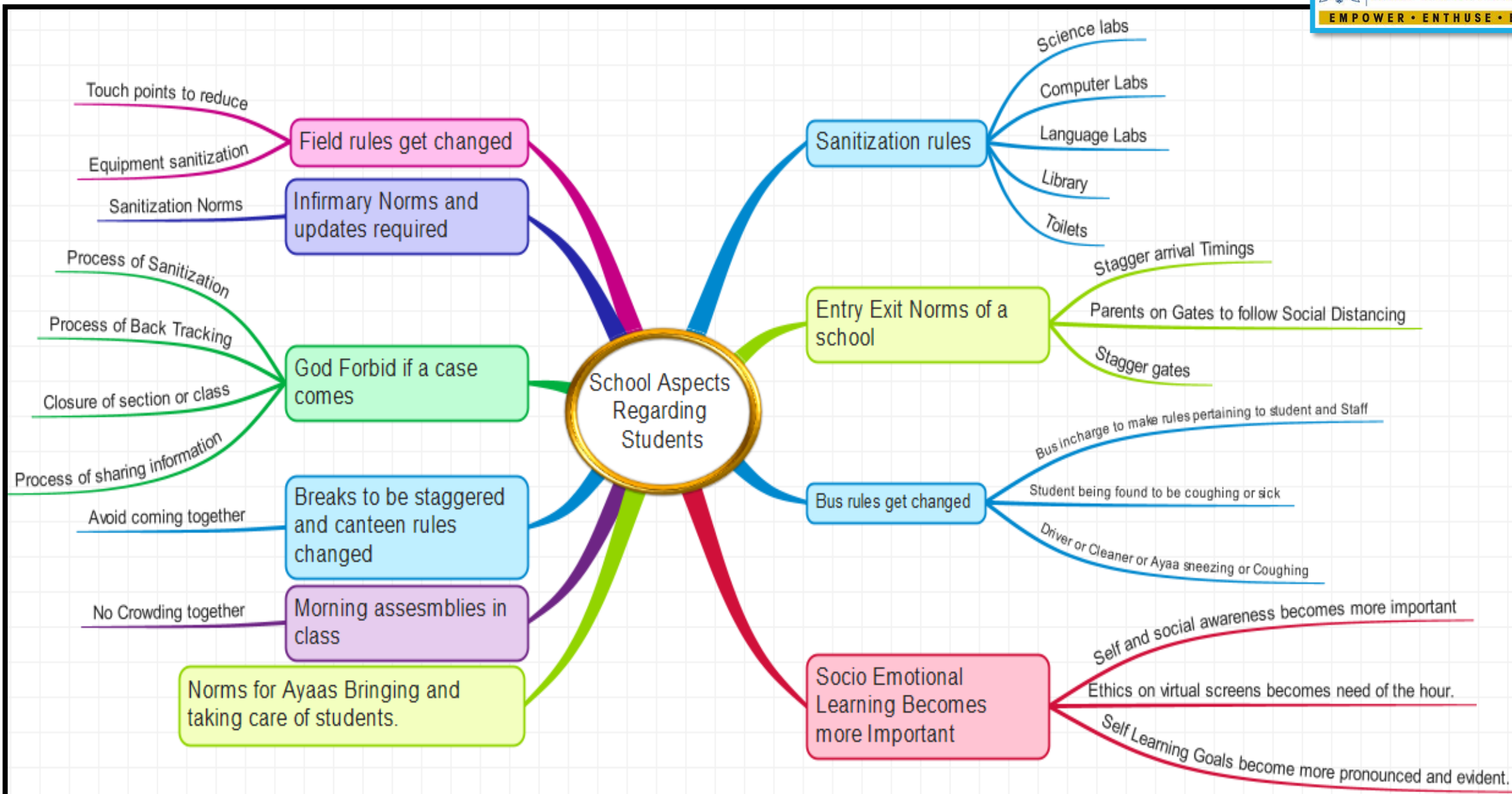
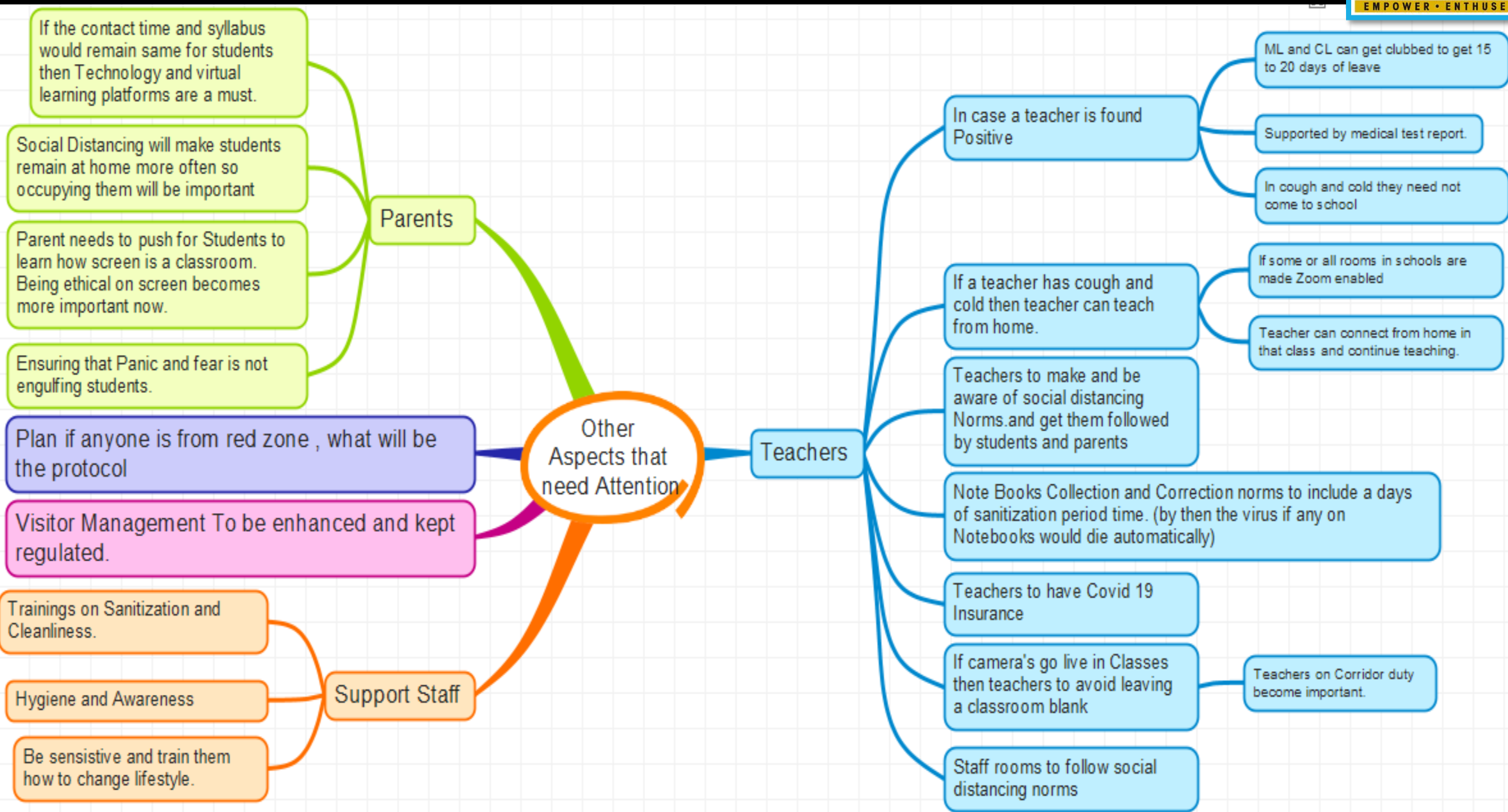


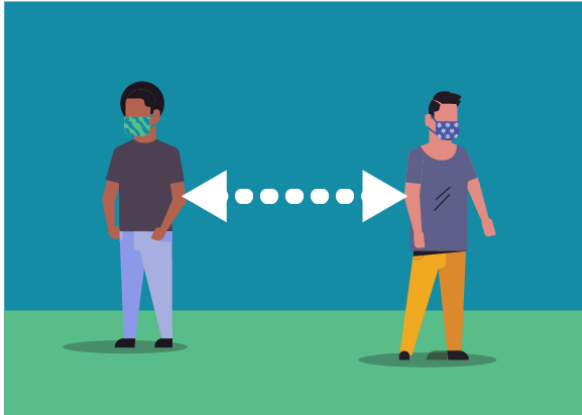
PREPARATIONS THAT SCHOOLS MUST DO FOR SCHOOLS TO REOPEN AFTER LOCKDOWN







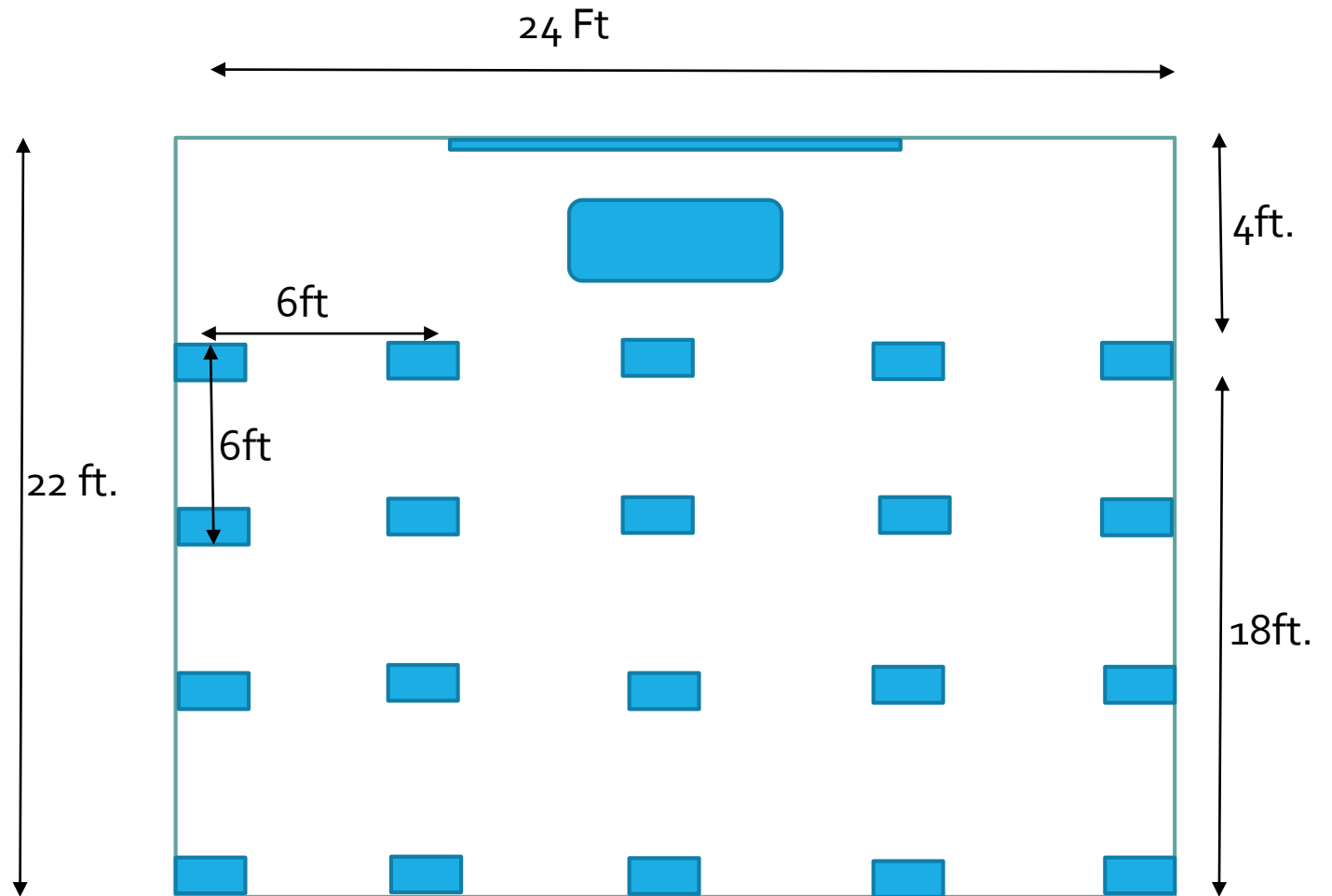
Social Distancing and Schools



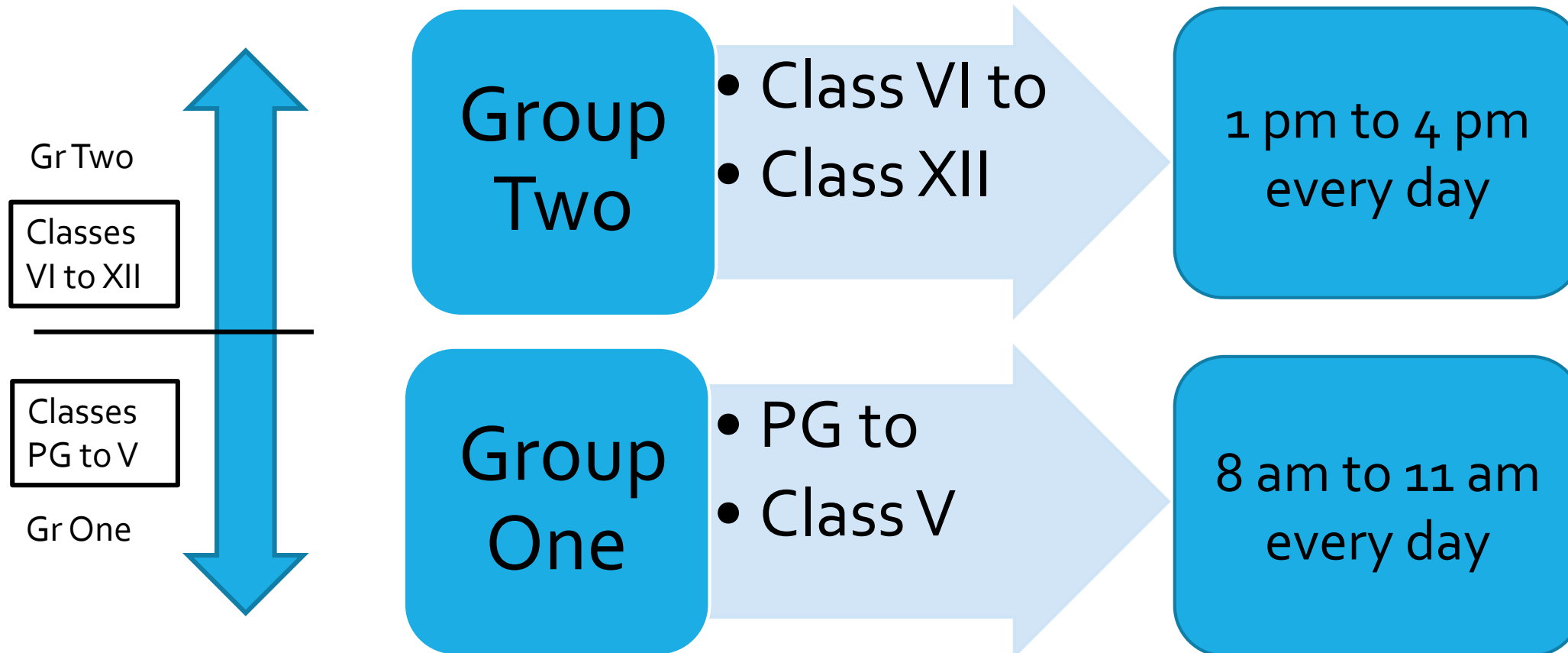
Stay at least 6 feet from other people

Most Class rooms in schools are 500-600 square feet. With dimensions as 24ft by 22 ft.

Ideal Class capacity will be 16- 20 students, which is going to be almost half of 35 to 40 students that are currently in place in many schools.



OPTION ONE : DIVIDE SCHOOL IN TWO GROUPS



Possibility with Option 1

PG to Class V

- 8am to 11 am
- 5 Days a week.
- 15 hours a week.
- Time reduces to half

Class VI to XII

- 1pm to 4 pm
- 5 Days a week
- 15 hours a week.
- Time reduces to half

Teachers

- 8am to 4 pm
- 5 Days a week
- 40 hours a week.
- Time increases

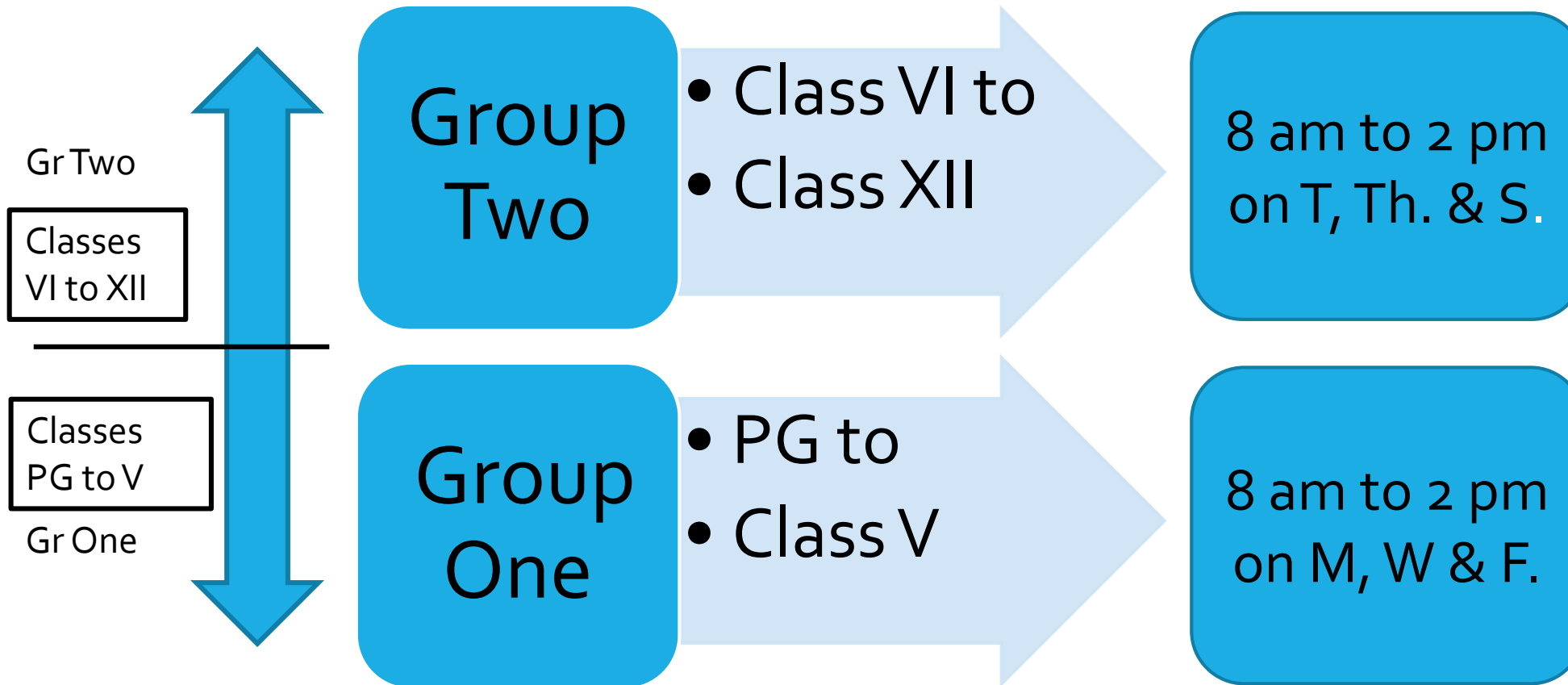
Impacts

- Transport Cost increases to double.
- Syllabus needs to be reduced to half.
- Reschedule TT

Impacts

- Number of Sections become double.
- Some furniture will not be age appropriate
- Teachers spread out to teach wider group of classes.

OPTION TWO : DIVIDE SCHOOL IN TWO GROUPS





Possibility with Option 2

PG to Class V

- 8am to 2pm
- 3 Days a week.
- 18 hours a week.
- Time reduces to half

Class VI to XII

- 8 am to 2 pm
- 3 Days a week
- 18 hours a week.
- Time reduces to half

Teachers

- 8am to 2 pm
- 6 Days a week
- 36 hours a week.
- PTMs get pushed as student time becomes less.

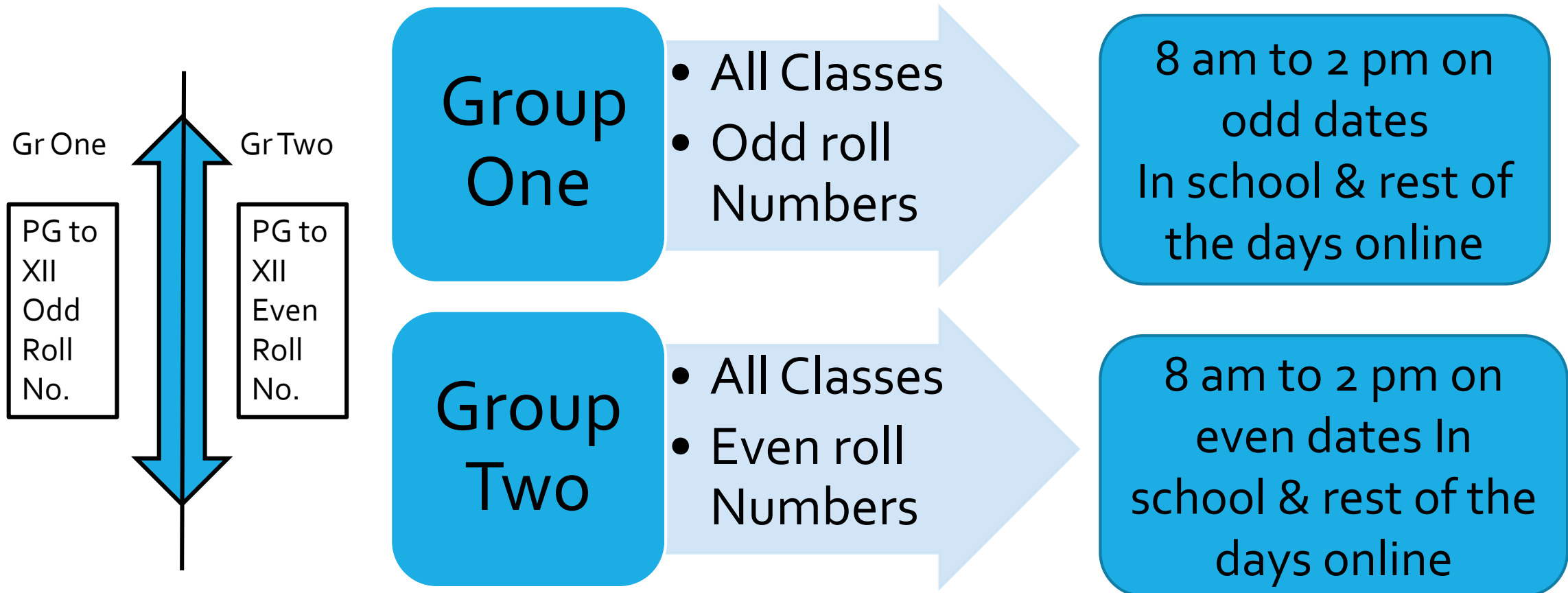
Impacts

- Transport remains same
- Syllabus needs to be reduced to half.
- Reschedule TT

Impacts

- Number of Sections become double.
- Some furniture will not be age appropriate
- Teachers spread out to teach wider group of classes.

OPTION THREE : DIVIDE SCHOOL IN TWO GROUPS & USE TECHNOLOGY



Possibility with Option 3

PG to Class XII ODD

- 8am to 2pm
- Odd roll numbers of student on odd dates in school.
- On even dates online classes at home.
- Classrooms get IT enabled.

PG to Class XII EVEN

- 8am to 2pm
- Even roll numbers of student on Even dates in school.
- On odd dates online classes at home.
- Classrooms get IT enabled.

Teachers

- 8am to 2 pm
- 5 Days a week
- 36 hours a week.
- PTMs etc. can be held on Saturdays.
- For Exams online systems or half school at a time.

Impacts

- Transport Cost remains same
- Syllabus remains same and no rescheduling .
- TT remains same only some changes required in class room IT structure.

Impacts

- Number of Sections remain same.
- Teachers continue to teach same classes and connect alternate days.
- Students get same time.



Relax, Think With
Your Teams. We Can
Get Over IT .

